

# WS-R Stainless steel weather shield adaptable to ...Run actuators

Subject to change!

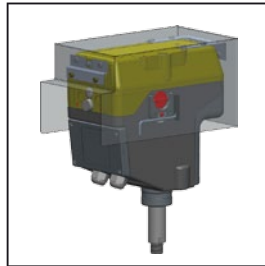
Type	Description
WS-R	Stainless steel weather shield for ...Run...

## Product views and applications

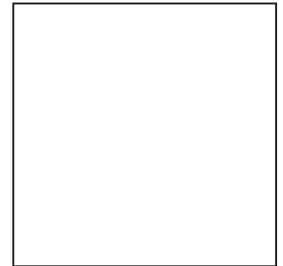
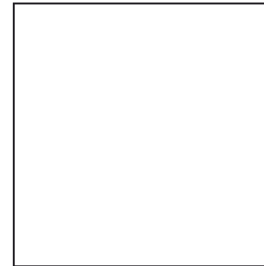
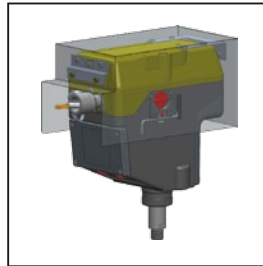
WS-R



WS-R with ...Run



WS-R with ...Run-A

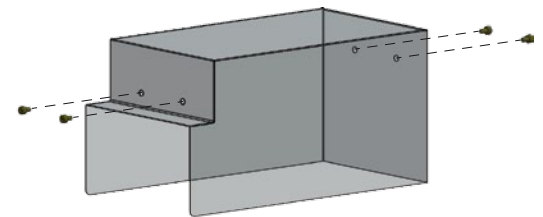


## Mounting

1. Mount front bracket,
2. Mount rear bracket
3. Put weather shield over the actuator
4. Fix screws

### Important Notes

Avoid direct sunlight!  
The maximum permissible ambient temperature may be exceeded.



## Technical data

Housing material	V4A / AISI 316L / DIN EN 1.4404
Bracket	V4A / AISI 316L / DIN EN 1.4404
Screws	V4A / AISI 316L
Dimensions	L x W x H = 251 x 126 x 132 mm
Weight	~ 1 kg
Delivery	Weather shield, brackets, screws

