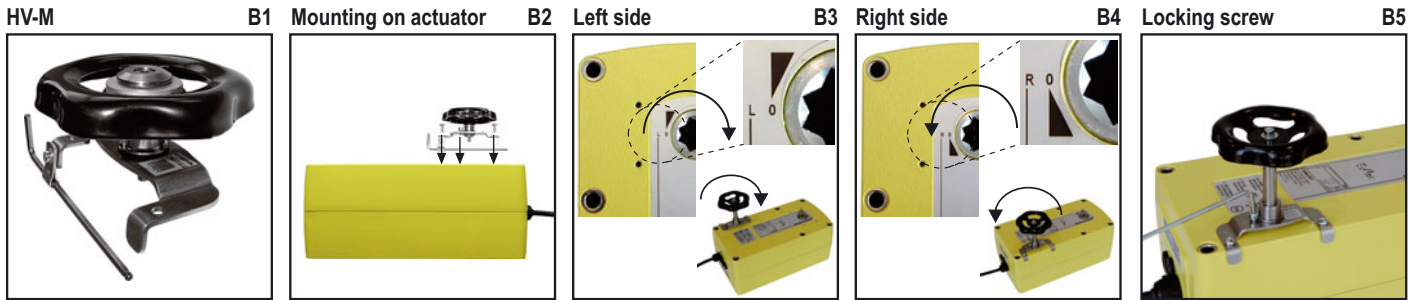


Manual override of ExMax, RedMax and InMax actuators size M

Type	Description
HV-M	Manual override for mounting on ...Max actuator size M

Description



Installation / Description

1. The manual override handwheel has to be secured on the actuator by means of the 2 screws included in the delivery. (see B2)
Hereby, attention must be paid that the hexagonal spike of the manual override locks exactly into the hexagonal hole in the actuator.
2. The locking screw situated beside the handwheel (see B5) must be firmly tightened with the enclosed hexagonal spanner.
 - a.) Manuel mode: screw must be tighten
 - b.) Motor mode: screw must be unlocked

Operation

The steps described above should already have been completed:

The actuator can be brought into the required position with the hand wheel. Consider rotation direction.

In case of installation on the left side (see B3) the actuator will be opened by turning the manual override handwheel to the right.

The manual override handwheel may not be turned beyond the highest or lowest mechanical end stop. This would destroy the actuator.

In case of installation on the right side (see B3) the actuator will be opened by turning the manual override handwheel to the left.

The manual adjustment wheel may not be turned beyond the highest or lowest mechanical end stop. This would destroy the actuator.

Attention: The operation of the actuator when locking screw is tightened as well as the disregard of the direction of rotation will destroy the actuators.
The use of the manual override may only occur de-energized.

Technical data

Type	HV-M
Compatible to actuator types	ExMax, RedMax and InMax size M, to be mounted directly on the actuator.
Delivery size	1 Manual override, 2 mounting screws
Delivery	Motor mode screw unlocked

! Attention !

1. The manual override may only take place in a currentless state.
2. Risk of injury exists by pole-mounted manual override when operated electrically.
3. The handwheel rotates with the actuator!